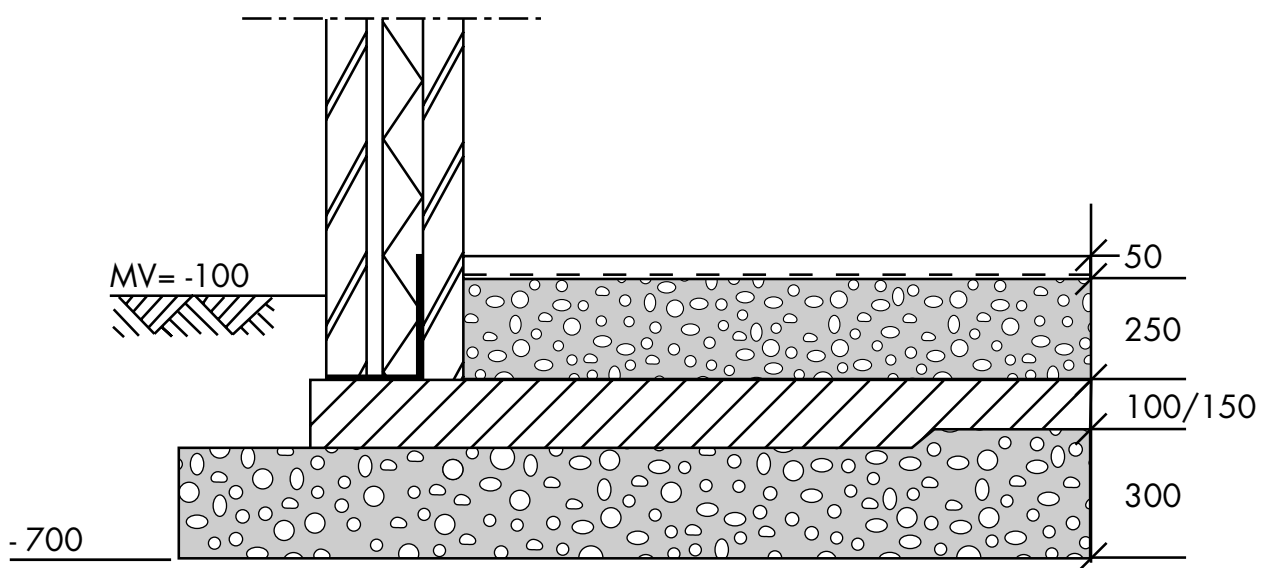
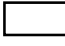


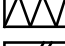
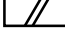

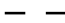


3. Traditionele bouw (evenwicht)

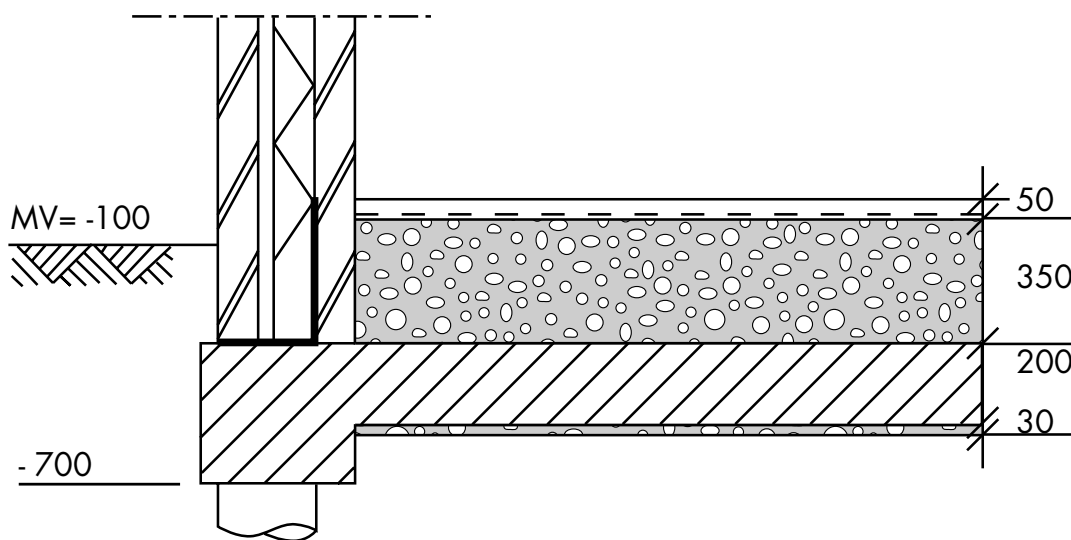
3a) Schuimbeton fundering met tussenliggende betonstrook of betonvloer.



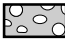
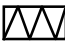
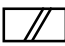

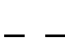


-  dekvloer (zand-cement of anhydriet)
 -  betonvloer
 -  schuimbeton
 -  isolatie
 -  metselwerk
 -  DPC folie
 -  - - dampdicht folie
- maten in mm

3. Traditionele bouw (palen)

3b) Schuimbeton vullaag / isolatielaag op onderheide plaatfundering (= ANVORA vloer).



-  dekvloer (zand-cement of anhydriet)
 -  betonvloer
 -  schuimbeton
 -  isolatie
 -  metselwerk
 -  DPC folie
 -  dampdicht folie
- maten in mm